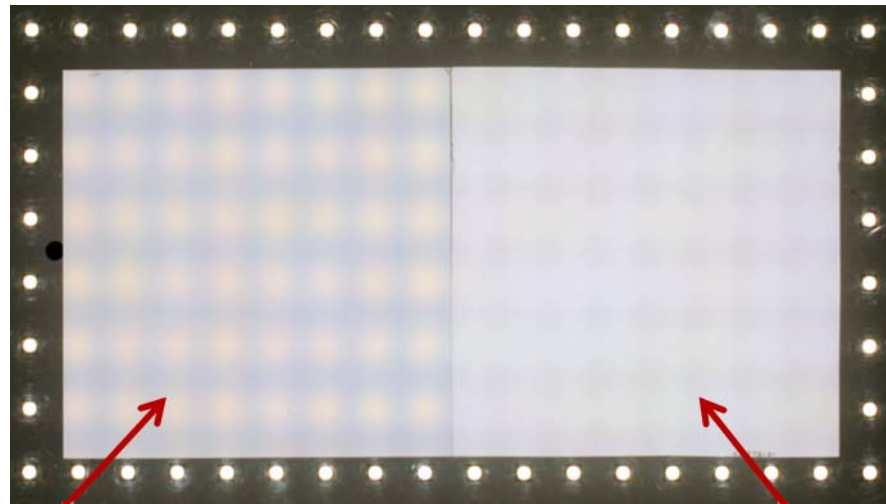


Color Shifts in Volumetric Diffusers

Color shift is also visible in pixel images, showing as warm center with cool perimeter



*A leading volumetric
(cloudy plastic) diffuser*

*Bright View
C-HE55 Diffuser*



OPTICS THAT TRANSFORM

APN-CMI-002 Rev B

Photos taken on an LED array

Color Shifts in Volumetric Diffusers

Volumetric (cloudy plastic) diffusers exhibit angle-dependent color

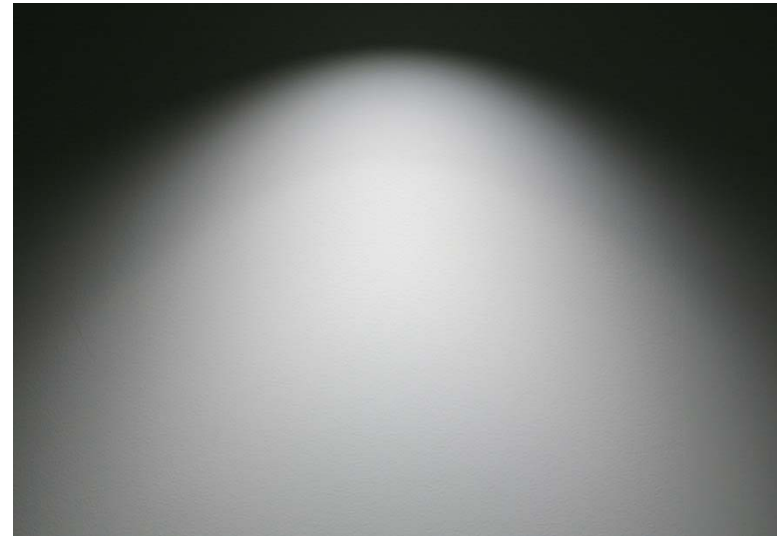
- ❑ May hinder Energy Star performance (color uniformity)

*Leading **Volumetric**
(cloudy plastic) diffuser*



- Blue halo at top
- Fails Energy Star requirements

*Bright View
Microstructure Diffuser*



- Excellent color uniformity
- Slightly narrower angles
 - More light on task
 - Brighter in center



OPTICS THAT TRANSFORM

APN-CMI-002 Rev B