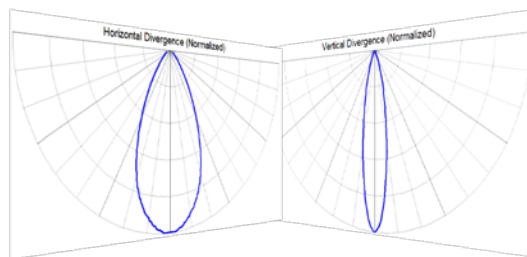


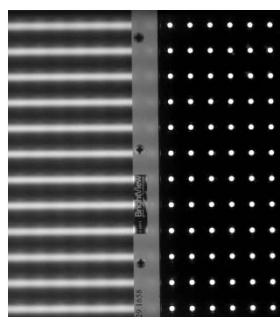
# Elliptical Diffusers


## E-Series Elliptical (Asymmetric) Diffusers

E-Series elliptical diffusers spread asymmetrically – more strongly in one direction than the other. They are used to diffuse a line of LEDs into a smooth line or to blend adjacent fluorescent lamps. They are also used to provide optimum beam smoothing and spreading in wall-wash, linear, and cove applications. Because diffusion is only applied along one direction, efficiency can be even higher than C-Series diffusers. Bright View’s unique design causes less scalloping than other approaches, giving a smoother visual result.



Product	Hides LEDs at distance of	Diffuser Strength <i>(higher numbers are more diffusive)</i>	Efficiency in typical LED luminaire <sup>1</sup>	Comments
E-6010	1 : 1	60 x 10	91 – 95 %	Mixes lines of LEDs, and homogenizes fluorescent lamps. Also excellent for wall wash, cove, specialty
E-1560	1 : 1	15 x 60	90 – 95 %	
<b>NEW</b> E-3060	1 : 1	30 x 60	89 – 93 %	
<b>NEW</b> E-0160	1 : 1	0.3 x 60	90 – 96 %	
<b>NEW</b> E-0140	1 : 2	0.3 x 40	91 – 96 %	
<i>Others coming soon</i>				



60 x 10  
Orientation: 



Fluorescent Tube Replacement  
Orientation: 

**Usage Notes:**

- For lamp hiding as pictured above, E-Series diffusers are directional and are generally used with the microstructures facing *away* from the LEDs or lamps; please try both orientations
- For light spreading in wall-wash and cove applications, E-Series diffusers are generally used with the microstructures facing *toward* the LEDs or lamps; please try both orientations
- Bright View applications engineers can assist with product choices and help your design achieve peak performance

1. Efficiencies are typical; they vary greatly depending on luminaire design. Bright View tests include: commercial 4-inch LED downlight module, linear LED fluorescent tube-replacement, 2'x2' LED troffer with clear acrylic cover